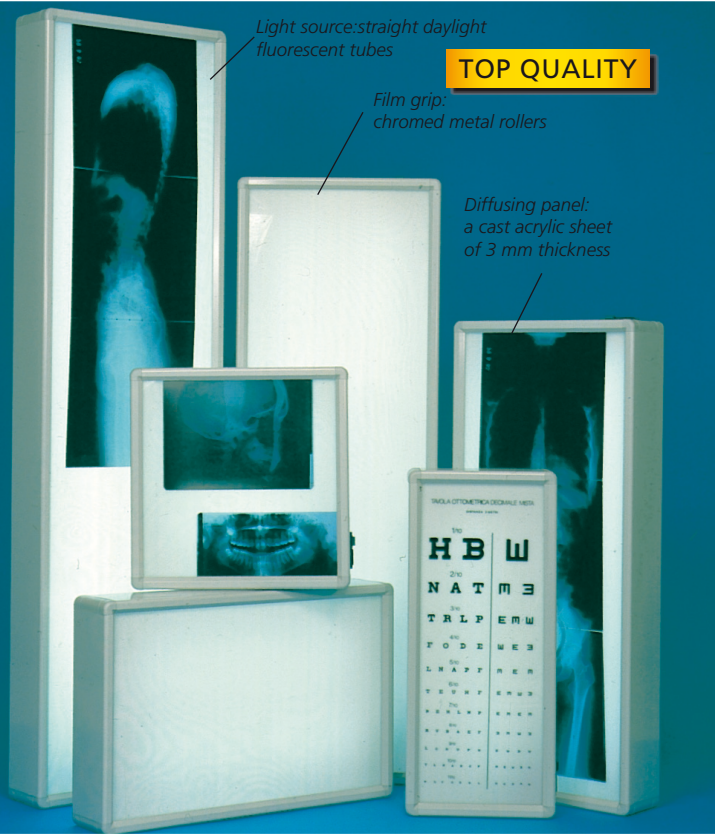




# X-RAY ILLUMINATORS - LIGHT BOXES



Light source: straight daylight fluorescent tubes

**TOP QUALITY**

Film grip: chromed metal rollers

Diffusing panel: a cast acrylic sheet of 3 mm thickness

## X-RAY ILLUMINATORS

GIMA light boxes are designed according to clinical standards for an extra white light for an accurate and precise reading of any detail. Incorporates a 3 mm acrylic screen compliant with safety norms (fuses, Shuko plug, green light On/Off, ...). Can be used on the table placed horizontally, vertically, or wall mounted.

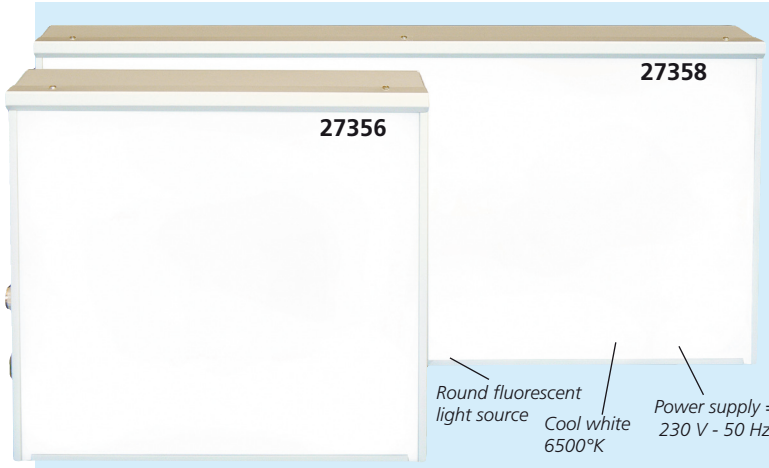
Body made of oven-fired epoxy powder coated aluminium and injected ABS (colour RAL 7035).

### TECHNICAL SPECIFICATIONS

Colour temperature: Cool white 6,500 °K  
 Power supply: 230 V - 50 Hz  
 Protection fuse: 2x1A  
 Bipolar light switch  
 Schuko plug with 2 m cable  
 All components UL, DVE, IMQ approved  
 Made in Italy

GIMA code	X-RAY ILLUMINATORS - LIGHT BOXES	External dimensions (cm)					
		Length	Height	Depth	Weight		
27364	Light box 38x38 cm	43	43	12	6	■	1 panel
27365	Light box 38x62 cm	67	43	12	8	■	1,5 panel
27366	Light box 38x92 cm	97	43	12	11	■	2 panels
27367	Light box 38x122 cm	127	43	12	14	■	3 panels
27368	Light box 38x153 cm	158	43	12	18	■	4 panels
27369	Light box 76x122 cm	127	2x43	12	28	■	2x3 panels
27370	Light box 76x153 cm	158	2x43	12	36	■	2x4 panels
27372	Light box 92x38 cm	43	97	12	11	■	2 panels vertical
27373	Light box 122x38 cm	43	127	12	14	■	3 panels vertical
27378	Neon tube for 27364						
27379	Neon tube for 27365						

# VALUE FOR MONEY LIGHT BOXES



27356

27358

Round fluorescent light source Cool white 6500°K Power supply = 230 V - 50 Hz

GIMA x-ray illuminators has been designed according to clinical recommendations for an extra white light to give an accurate and precise reading of any detail.

Manufactured with metacrylate screen, and according to safety norms (fuses, shuko plug, green light on/off, ...). The unique film gripping system gives full use of viewing area. White colour.

Made in Italy.

**AVAILABLE ALSO WITH ADJUSTABLE LIGHT**

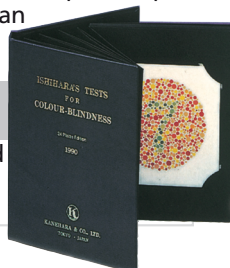
GIMA code	X-RAY ILLUMINATORS - LIGHT BOXES	External dimensions (cm)					
		Length	Height	Depth	Weight		
27356	36.5x40 cm	38.5	43.5	11	5.4	■	1 panel
27357	36.5x40 cm - adjustable	38.5	43.5	11	5.4	■	1 panel
27358	75x40 cm	77	43.5	11	11	■	2 panels
27359	Round fluorescent light - spare						

# ISHIHARA COLOUR TEST

- 31290 ISHIHARA COLOUR TEST - box of 10 plates
- 31291 ISHIHARA COLOUR TEST - box of 24 plates
- 31292 ISHIHARA COLOUR TEST - box of 38 plates

These series of plates are designed to provide a test which gives a quick and accurate assessment of colour vision deficiency of congenital origin. This is the most common form of colour vision disturbances. Most cases of congenital colour vision deficiency are characterized by a red-green deficiency which may be of two types: first, a protan type which may be absolute (protanopia) or partial (protanomalina), and secondly, a deutan type which may be absolute (deutanopia) or partial (deutanomalina).

GIMA code	ISHIHARA COLOUR TEST
31290	Book of 10 plates - for unlettered
31291	Book of 24 plates
31292	Book of 38 plates

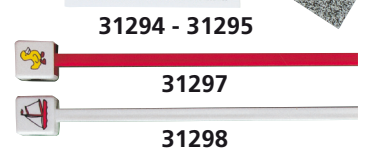
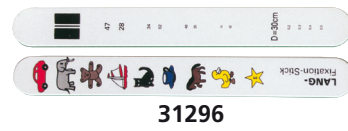


# LANG STEREOTEST

- 31294 LANG STEREOTEST I
- 31295 LANG STEREOTEST II

Stereotest I was created to simplify stereopsis screening in children. It is based on two principles: on random dots and on cylinder gratings. Stereotest II is a further development and helps the assessment of binocular vision.

- 31296 LANG FIXATION STICK
- 31297 LANG FIXATION CUBE - white
- 31298 LANG FIXATION CUBE - red



31294 - 31295

31297

31298